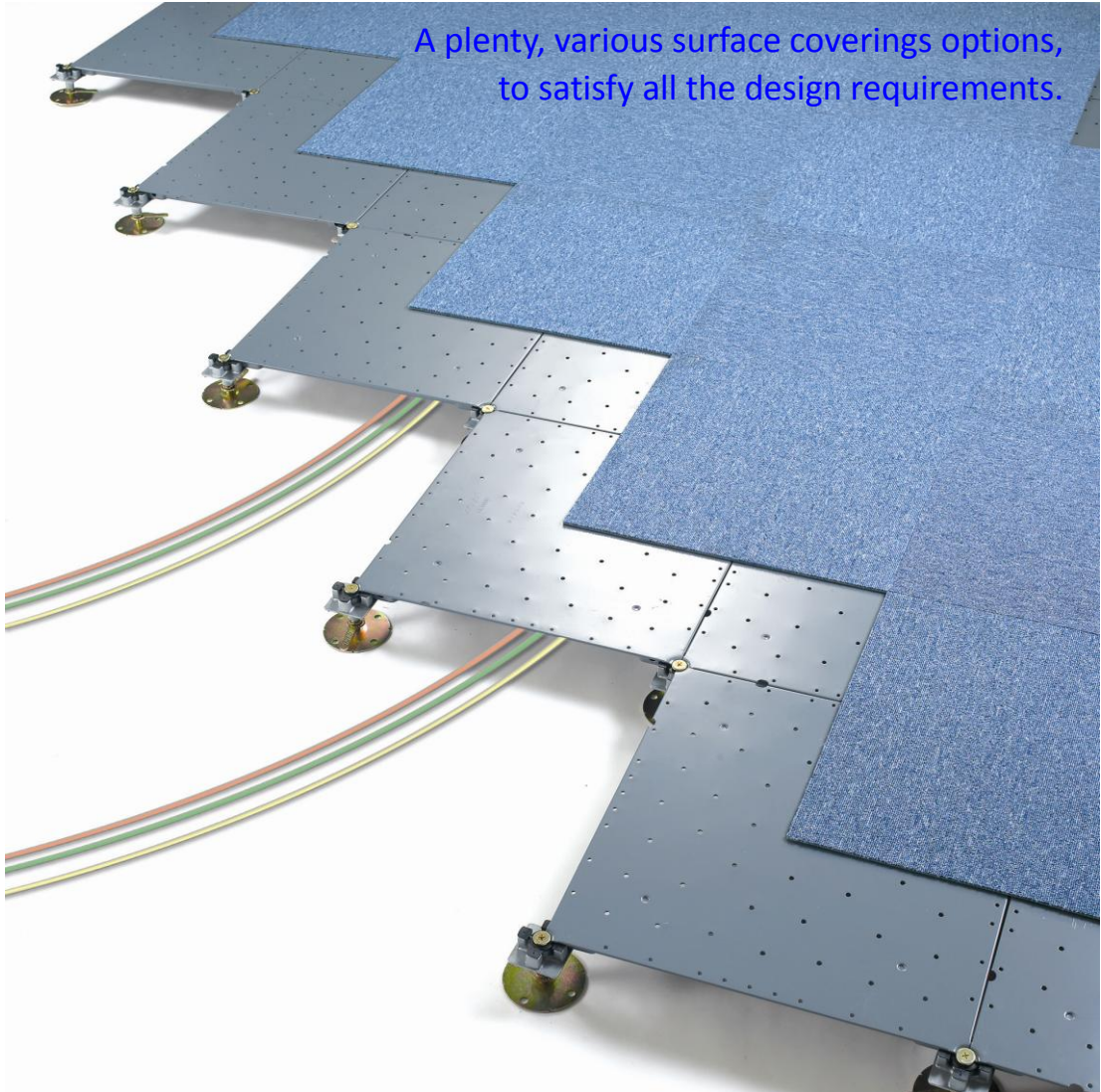


ABOMB Raised Access Floor System

A plenty, various surface coverings options,
to satisfy all the design requirements.

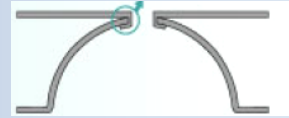


HORN YA ENTERPRISE LTD

www.abomb-floor.com

ISO-9001:2008 Certification

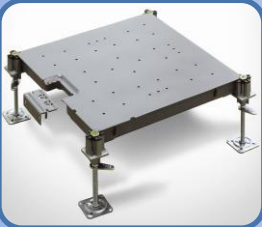
PRODUCT- ACCESS FLOOR SYSTEMS



FK-3000 (Perforate, Shockproof, Environment Friendly ,)



- Loading Property: 3000N / 5000N
- Panel Thickness: 28mm
- Panel Weight: 5.22kg/PC (3000N) , 7.5kg/PC (5000N)
- Shock proof design: one point mounting that hold down four boards
- Surface Material: Carpet, PVC tile



Special Panel (wire, cable management)

- *Flexible to manage cable /wire.
- *Panel maintains design load strength.

Core Material: Foam cement infill

Top, Bottom Covering: Steel sheet on hydrochloric phosphate membrane coating with epoxy powder coated, for anti-corrosion, rust

Surface: All steel with perforated, bare steel, or cover HPL, Carpet etc.

Application: Data Center, Call or Telecommunication center, Server Center, Intelligent Buildings, Power Plants, Banks.

Feature Introduction

- *Anti-Static
- *Anti-dust, Resistant to burning cigarettes (CNS10678-A2171, chapter: 8.7.1 &8.7.2)
- *Fire Certification: CNS14705 (2010) Class I
- * Easily removable
- * Quick accessibility
- * Reliable performance
- * Durable standards, wearability
- * Easy-to-maintain
- * Automated Production to ensure the Quality stability

ABOMB HORN YA ENTERPRISE LTD

Tel:886-3-4608838 Fax: 886-3-4608318

Contact: horn.ya@msa.hinet.net Website:www.abomb-floor.com

Special Feature:

*Shockproof: One-point mounting that holds down four boards, with shockproof index rated at 1.0G

* Green design  , 100% recycle, reusable.

Technical Specification: (JIS A 1450-2003 testing methods)

Model	Type	Specification	Concentrated Load			Ultimate Load(N)	Impact Load(N)	Flammability
			LB	N	KG			
FS-53 & FS-53F & FK-3000	300	C500mm*W500mm *H35mm	660	3000	306	>=6000	>=6000	Non-combustible
	500		1120	5000	510	>=10000	>=10000	Non-combustible

*1000N around 102 kgf * JAJA : Japan Access Floor Association

ABOMB HORN YA ENTERPRISE LTD

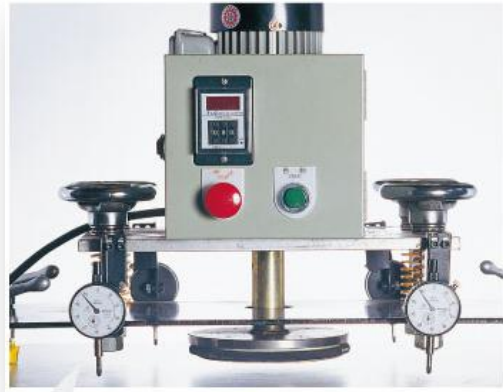
Tel:886-3-4608838 Fax: 886-3-4608318

Contact: horn.ya@msa.hinet.net Website:www.abomb-floor.com

Loading Reliability & Safety Test

Surface Abrasion Test

- refer to CNS11367 criterion



Impact Test

-Use 0.5kg steel ellipsoid,
falling down from 1M height

Impact Test

-use 75kg sand bag (bottom Dia.22cm),
falling down test from 0.5m height



Concentrate Load Test

- refer to CNS10678-A2171 criterion

ABOMB HORN YA ENTERPRISE LTD

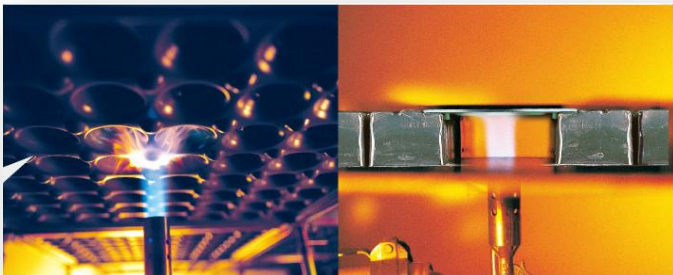
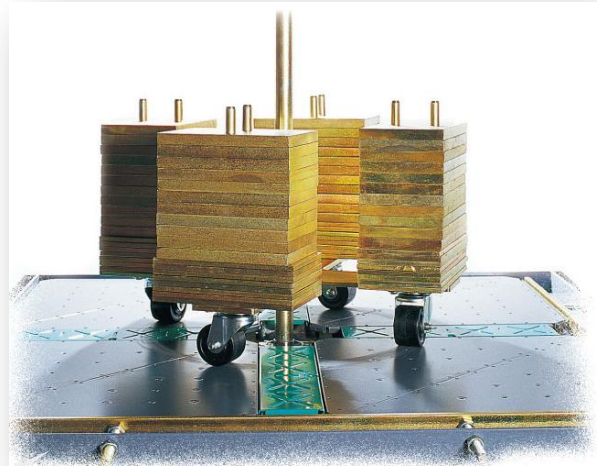
Tel:886-3-4608838 Fax: 886-3-4608318

Contact: horn.ya@msa.hinet.net Website:www.abomb-floor.com

Rolling Load Test

-simulate 10years usage in Office.

1. Use the 200kg load trolley in 500,000 times (back and forth)
2. Use 80kg load office chair in 1,000,000 times (back and forth)



Fire-Protection Test

-refer to CNS-7614-A3125 ,
Anti-Flammability Class I, 120sec

Seismic Test

- Test by the Spectrum shock meter which is designed for shockproof of NUCLEAR PLANT.
- Result as one-point mounting that holds down four boards, with shockproof index rated at 1.0G



ABOMB HORN YA ENTERPRISE LTD

Tel:886-3-4608838 Fax: 886-3-4608318

Contact: horn.ya@msa.hinet.net Website:www.abomb-floor.com